

giachi

Paolo Giachi lives and works between Milan and Pietrasanta, known as the "City of Artists", in Tuscany.

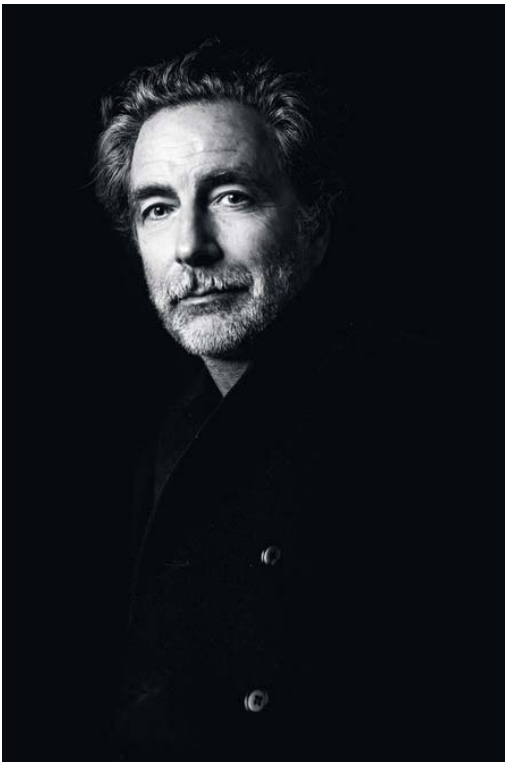
In Giachi's work co-exist aspects of architectural risk and innovation as well as elements of measured balance. His close collaboration with some of the world's most influential designers and entrepreneurs in fashion and retail, has made Paolo Giachi keenly aware of how symmetry and proportion, superb workmanship and refined aesthetics come together to create beautiful surroundings.

After studying Architecture at the University of Florence and graduating with a thesis on Lighting, Paolo Giachi spent 4 years in Asia developing retail projects for some of the most important European luxury brands such as Prada, Miu Miu and Jil Sander. Subsequently, Giachi moved to Milan where he was the in-house architect for Tod's and Hogan. Imbued with enormous vision and taste and possessing vast experience working immersed in distinct cultural scenarios, Paolo Giachi approaches each project with passion and great diligence, providing inspiring solutions for his clients across the globe.

Through the years, Giachi's use of refined craftsmanship has resulted in his having a talented team of skilled artisans who execute the many subtle and exquisite elements of Giachi's interiors.

Today Giachi Studio is engaged in a multitude of retail projects around the world from mono-brand specialty boutiques to multi-brand luxury stores. In particular: Charlotte Olympia stores and flagships in Hong Kong, Dubai, Bal Harbour/Miami and Los Angeles - Jimmy Choo boutiques around the globe - Brioni men's stores in Rome and Florence - and numerous other luxury retail projects across Italy, Russia, China and the U.S.

Paolo Giachi implements a refined and fluid language of Italian design to create unique and alluring interiors which inspire in their creativity and sophistication.



Paolo Giachi